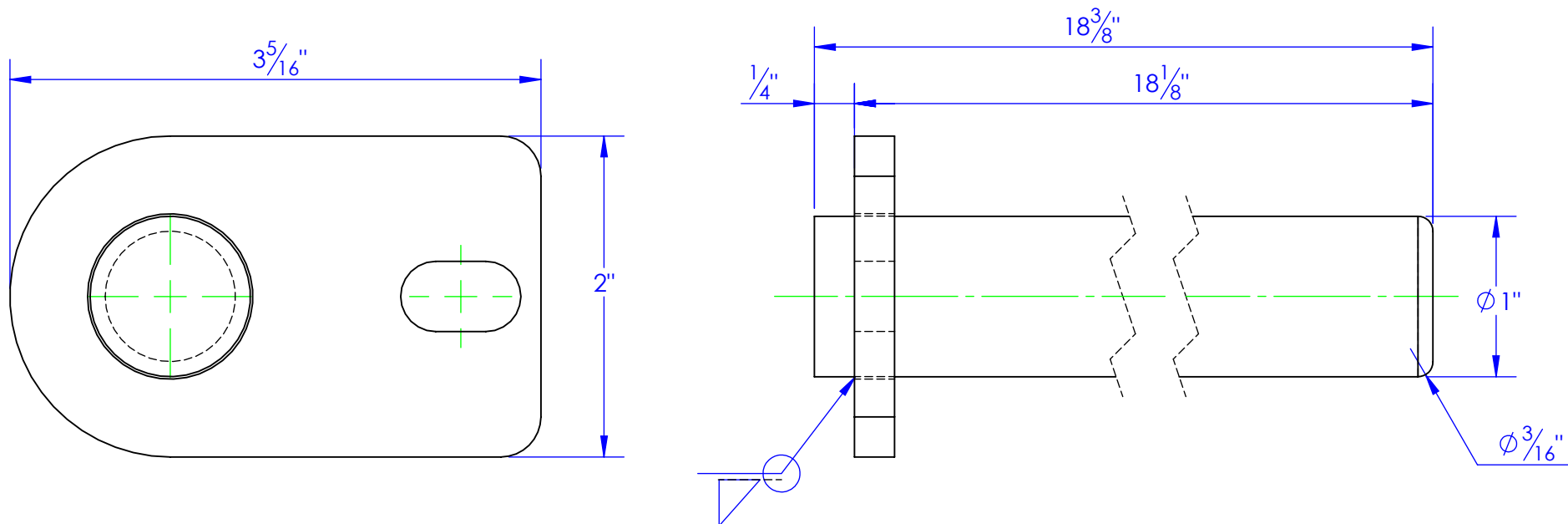
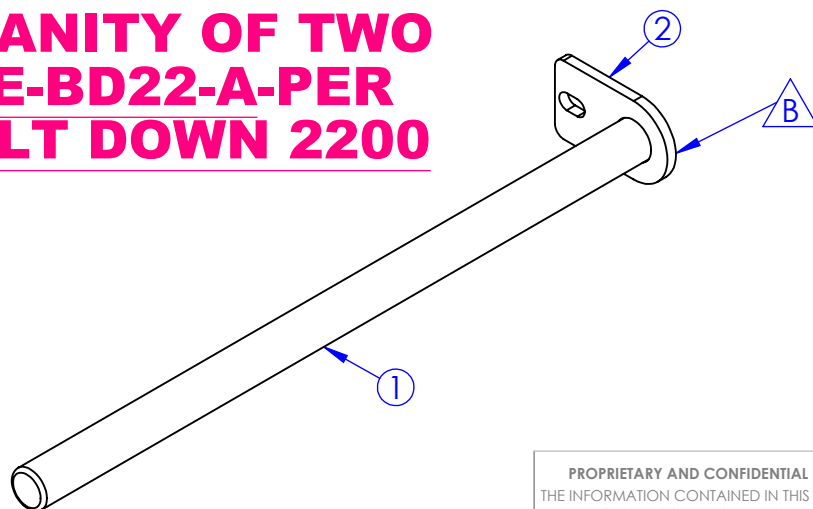


ITEM NO.	PART NUMBER	DESCRIPTION	MATERIAL	DRAWING #	QTY.	REVISIONS			
1	STC-CR 1x4142. L 18.375	LENGTH: 18-3/8"	CR 1x4142	20-1119	1	REV.	DESCRIPTION	DATE	APPROVED
2	FP-BD22-2A	MOUNT PLATE, HINGE PIN, BD2200	1/4" HRS	20-2102	1	B	UPDATED TO MATCH 3D MODEL	1/13/2012	



**QUANTITY OF TWO
RE-BD22-A-PER
BOLT DOWN 2200**



MATERIAL NOT SHOWN		
PART #	DESCRIPTION	QTY PER ASSEMBLY:
BO 3/8x1-3/4	3/8 BOLT	1
BO 3/8 HNN	3/8 NUT	1
BO 3/8 FW	3/8 WASHER	1

PROPRIETARY AND CONFIDENTIAL
THE INFORMATION CONTAINED IN THIS
DRAWING IS THE SOLE PROPERTY OF TRIPLE
C INC. ANY REPRODUCTION IN PART OR
AS A WHOLE WITHOUT THE WRITTEN
PERMISSION OF TRIPLE C INC. IS PROHIBITED.

DIMENSIONS ARE IN INCHES TOLERANCES: FRACTIONAL $\pm 1/16$ ANGULAR: MACH ± 1 BEND \pm TWO PLACE DECIMAL ± 010 THREE PLACE DECIMAL ± 005	
MATERIAL	---
DO NOT SCALE DRAWING	

NAME	DATE
DRAWN HEATH	1/13/2012
PART #	RE-BD22-2
ASM #	
COMMENTS:	
PIN, HINGE, BD2200	

P.O. BOX 248, SABETHA, KS 66534			
TRIPLE C INC.			
SIZE A	DWG. NO. 20-1119 B	REV. B	
SCALE: 1:1	WEIGHT: 4.14 LBS.	SHEET 1 OF 1	